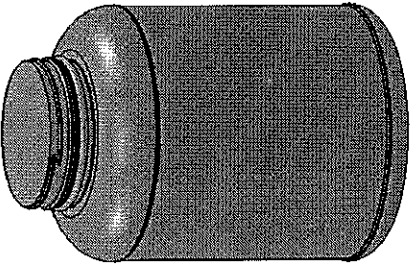
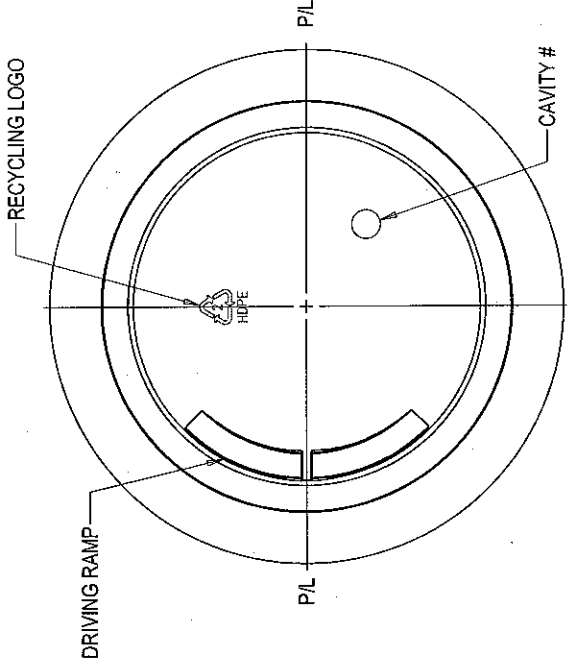
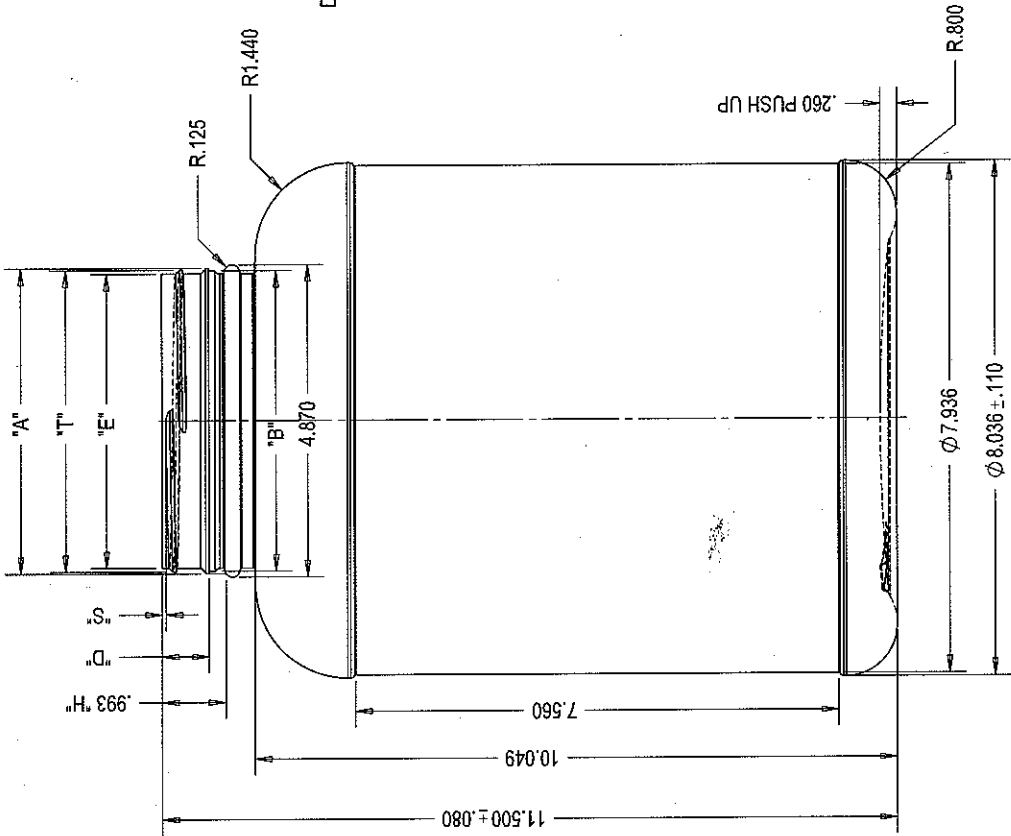


PART # 1650A009

NO.	REV. BY	DESCRIPTION	DATE
1	WAS	125 TUGM	SEP 06/11
2	V.F.	WAS 125 TUGM	SEP 07/11
3	V.F.	WAS 125 TUGM	SEP 07/11



NOTE:
 - ALL DIMENSIONS ARE TO BE IN INCHES UNLESS SPECIFIED.
 - ALL RADII & FILLETS ARE 1/64 R. MIN. UNLESS OTHERWISE SPECIFIED.
 - ALL DIMENSION & FILL CAPACITIES CONFORM TO S.P.L. STANDARDS.

BOTTLE SPECIFICATIONS		FILL CAPACITY:	
MATERIAL: HDPE	WEIGHT: 245 ± 5GM	OF CAPACITY: 80.00 ML ± 8.00 ML	
NECK SPECIFICATIONS			
FINISH	PANO 1201E	"D" DIA	.756 ± .015
STYLE	M	"B" DIA	4.684 ± .017
"T" DIA	4.707 ± .017	HEX ANG.	0° 47'
"E" DIA	4.587 ± .017	T.P.I.	5
"A" DIA	4.764 ± .017	FINCH	.200
BEAD DIA	N/A	CUTTER DIA.	.500
"S" DIA	.060 ± .015	THREAD TURNS	1
BLOW MOULD ENGINEERING			
OWN. BY: V.F.	DATE: 10/06/11	DESCRIPTION:	3 LTPACKER
APR. BY:	DATE:	DRAWING NO.:	A26-003-1-C
SCALE: 1:2			

1. BODY SIZES SHOWN ARE REPRESENTATIVE OF MEAN DIMENSIONS ONLY. FINAL PRODUCT SIZES ARE TO BE DETERMINED FROM ACTUAL PLASTIC SAMPLES.
2. ALL DIMENSIONS AND TOLERANCES CONFORM TO S.P.L. STANDARDS WHERE APPLICABLE.
3. THIS DRAWING MAY NOT BE REPRODUCED IN ANY FORM FOR ANY PURPOSE, UNLESS WRITTEN CONSENT IS GIVEN BY BLOW MOULD ENGINEERING.
4. BLOW MOULD ENGINEERING WILL NOT BE RESPONSIBLE FOR THE FUNCTIONALITY OF THE PART. ALL DRAWINGS MUST BE APPROVED BY THE CUSTOMER BEFORE PRODUCTION OF THE MOULD BEGINS.

AS/ISO →